



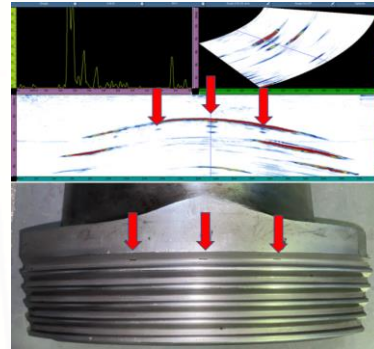
PHASED ARRAY (PAUT)



Developments in phased array technology offer potential for radical improvements in inspection performance and economy. Unlike a conventional probe, a phased array probe consists of a large number of independent crystals

WHY HAVE PHASED ARRAY BE YOUR CHOICE OF INSPECTION?

- Flexibility: set-ups can be changed in a few minutes, and typically a lot more component dimensional flexibility is available.
- Inspection angles: a wide variety of inspection angles can be used, depending on the requirements and the array
- Imaging: showing a “true depth” image of defects
- Quality: permanent recording and imaging provides weld map
- Detect ability/reliability: Eliminate the subjective of the manual UT inspection, Reduction in rejection
- Precise measurements: Flaw measurements can be electronically, precise location of flaws (length, amplitude, depth, and height)
- Improve defect detection capability
- Improve defect sizing
- Improve reliability and signal interpretation
- Ability to sweep the focal point of the beam through the inspection volume



MICRO PHASED ARRAY

Micro Phased Array In lieu of Radiography

- Results are available within minutes of the inspection.
- Inspections can be done while welding operations are taking place.
- No additional safety requirements
- All data is archived for auditing and reviewing purposes

